

# DATEL<sup>®</sup>

---



## DOCUMENTATION STATIONS FOR INTEGRATED OPERATING ROOMS



**In today's integrated operating suite, optimal space and workflow efficiency, as well as smart ergonomics, are of paramount importance. So whether you're an architect, space planner or nurse clinician, you share common objectives that InnerSpace has come to understand and appreciate over the past twenty years.**

**Datel® documentation stations are designed to house all of the necessary audio, video, data storage and communications equipment that is required for your integrated operating suite. Pre-configured units provide the best value and simplify the selection and ordering process. However, if your needs are unique, you can customize your unit with the "Build-A-Documentation Station" option. Material choices include stainless steel and laminate.**

**InnerSpace's complete line of organized carts, cabinets and casework are the perfect compliment to your Datel documentation station. From small and large procedure carts to storage cabinets and casework, we offer a full array of intelligently designed, well-built and economically priced equipment to organize supplies and improve staff efficiency.**

**A network of InnerSpace storage consultants and International distributors are ready to evaluate your needs and design a solution that works best for you.**

**InnerSpace storage systems are currently in place at healthcare facilities in the U.S. (all fifty states), throughout Canada and around the world. We look forward to meeting your needs as well.**

## TABLE OF CONTENTS

Page	Subject
2	The Datel Advantage
3	Features and Benefits
4 - 5	Pre-Configured Documentation Stations
6 - 7	Dimensions and Views, Pre-Configured Documentation Stations
8 - 9	Build-A-Documentation Station
10	Laminate Selection, Accessories & Product Specifications
11 - 12	Model Numbers & Descriptions

**The Datel Advantage** – Designing stylish operating room cabinetry that fits is one thing. But enabling the nurse clinician to operate with optimal efficiency, is paramount. The Datel documentation station has been designed in collaboration with architects, equipment planners, and nurses, to significantly enhance the nurse’s ability to manage an integrated operating room. Various manufacturers’ electronic equipment can be accommodated, along with the flexibility of adding cabinets and accessories to meet specific needs. The Datel documentation station’s equipment tower houses integrated equipment in a compact area, freeing-up valuable space for additional storage cabinets and accessories that improve workflow.



# Optimize workflow. Maximize space utilization. Operate with greater efficiency.

### CORD MANAGEMENT:

Cord pass-thrus between shelves and cabinets provide wiring convenience and organization.

### SIMPLIFIED INSTALLATION:

Large open backs enable easy access to and simplified installation of cords and connectors.

### SPACE OPTIMIZATION:

Tower houses switching units and peripherals.

### OPTIMAL POSITIONING:

Large pull-out work surface for keyboard/computer/touch screen allows nurse clinician to view the procedure.



**EQUIPMENT-READY:** Vented doors and large open backs are designed to maximize air flow and reduce heat build up.

**ACCESSIBILITY:** Pull-out shelf provides access to wiring and equipment for easy set-up and maintenance.



Pull-out shelf allows for easy loading and accessibility.



Pull-out work surface offers alternate positioning for staff to view the surgical area.



Open cabinet back provides easy access to electrical outlets and equipment wiring, while ensuring necessary ventilation.



Cord pass-thrus between shelves and cabinets for quick and easy routing of unsightly cords.

## Pre-Configured Documentation Stations – Laminate

78" (198.1 cm) and 54" (137.2 cm) Widths



### 78" (198.1 cm) Wide Features:

- 30" (76.2 cm) Wide laminate equipment tower with five (5) shelves – each with cord pass-thrus, vented doors and pull-out shelf
- Two (2) upper cabinets with adjustable shelf – each with cord pass-thrus
- Two (2) lower cabinets, one (1) with four (4) drawers and pull-out work surface, one (1) ventilated with adjustable shelf
- 48" (121.9 cm) work surface, two piece construction with 4" (10.2 cm) backsplash

Shown with optional key locks. Other optional accessories include slope tops, finished ends and task light.

DOC78L Laminate with Equipment Tower on Left (shown)  
DOC78R Laminate with Equipment Tower on Right



### 54" (137.2 cm) Wide Features:

- 30" (137.2 cm) Wide laminate equipment tower with five (5) shelves – each with cord pass-thrus, vented doors and pull-out shelf
- One (1) upper cabinet with adjustable shelf – each with cord pass-thrus
- One (1) lower cabinet with four (4) drawers and pull-out work surface
- 24" (61.0 cm) work surface, two piece construction with 4" (10.2 cm) backsplash

Shown with optional key locks. Other optional accessories include slope tops, finished ends and task light.

DOC54L Laminate with Equipment Tower on Left (shown)  
DOC54R Laminate with Equipment Tower on Right

## Pre-Configured Documentation Stations – Stainless Steel

78" (198.1 cm) and 54" (137.2 cm) Widths

### 78" (198.1 cm) Wide Features:

- 30" (76.2 cm) Wide stainless tall equipment tower with five (5) shelves – each with cord pass-thrus, vented doors and pull-out shelf
- Two (2) stainless upper cabinets with adjustable shelf – each with cord pass-thrus
- Two (2) stainless lower cabinets, one (1) with four (4) drawers and pull-out work surface, one (1) ventilated with adjustable shelf
- 48" (121.9 cm) stainless work surface with 4" (10.2 cm) backsplash

Optional Accessories: Key locks, slope tops and task light.

DOC78RS Stainless with Equipment Tower on Right (shown)  
DOC78LS Stainless with Equipment Tower on Left



### 54" (137.2 cm) Wide Features:

- 30" (76.2 cm) Wide stainless tall equipment tower with five (5) shelves – each with cord pass-thrus, vented doors and pull-out shelf
- One (1) stainless upper cabinet with adjustable shelf – each with cord pass-thrus
- One (1) stainless lower cabinet with four (4) drawers and pull-out work surface
- 24" (61.0 cm) work surface, two (2) piece construction with 4" (10.2 cm) backsplash

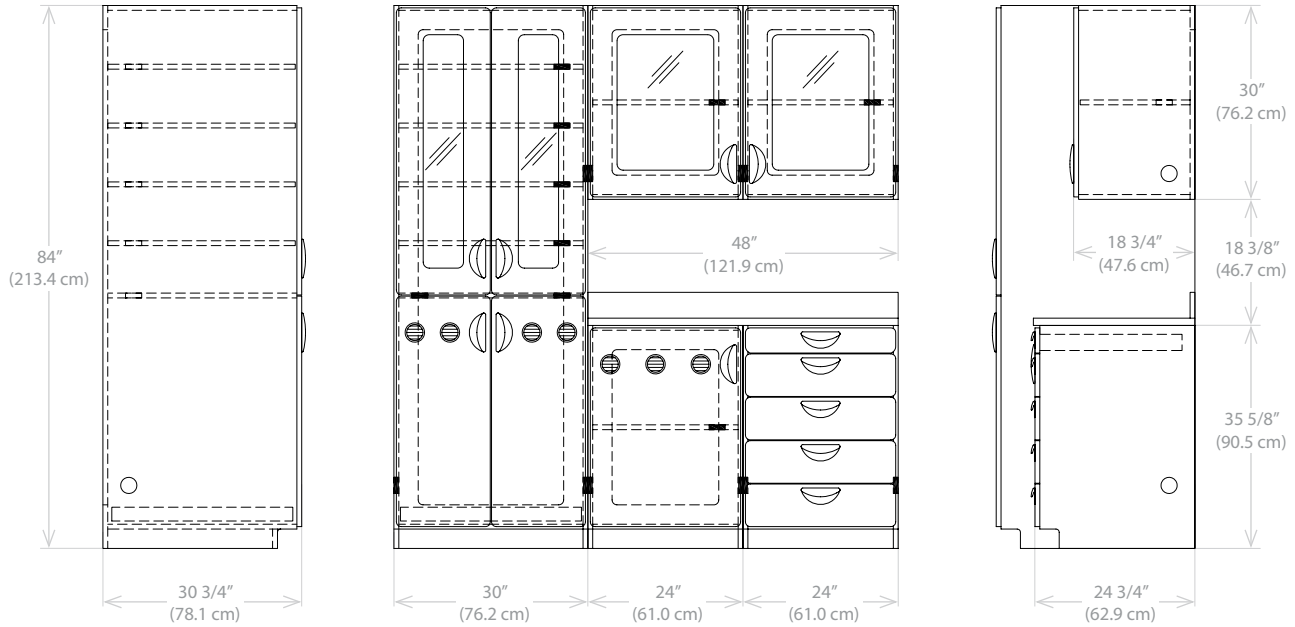
Optional Accessories: Key locks, slope tops and task light.

DOC54RS Stainless with Equipment Tower on Right (shown)  
DOC54LS Stainless with Equipment Tower on Left



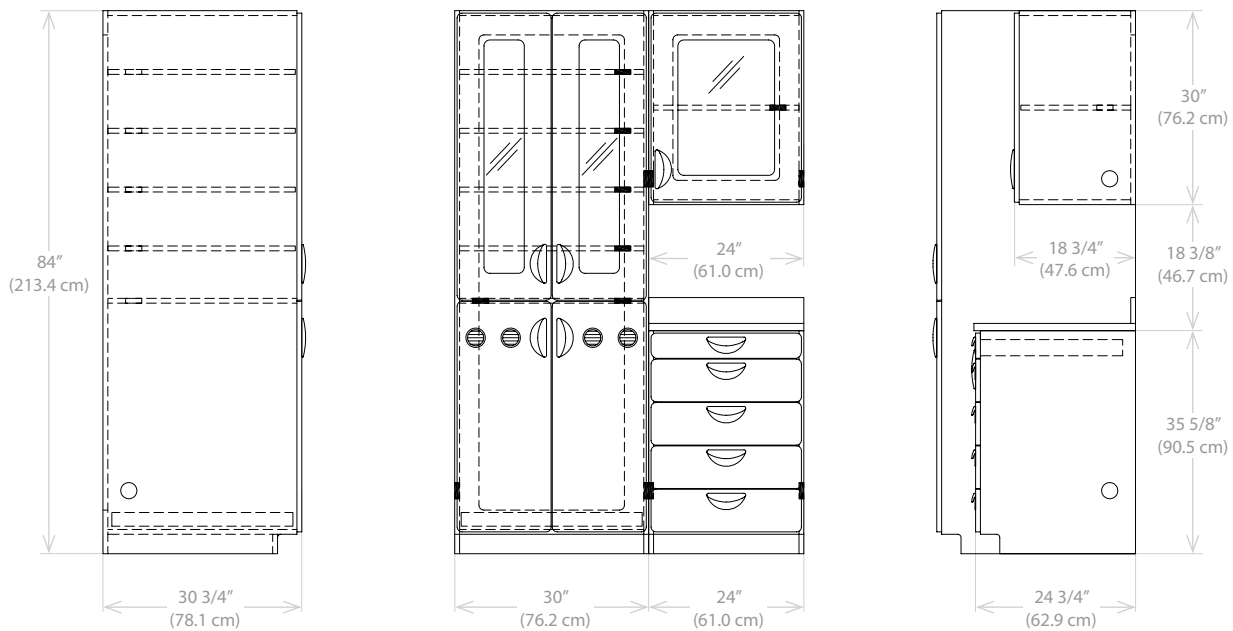
### Pre-Configured Documentation Stations – Laminate

78" (198.1 cm) and 54" (137.2 cm) Widths



DOC78L Laminate with Equipment Tower on Left (shown)  
 DOC78R Laminate with Equipment Tower on Right

○ — Wire Pass-Thrus

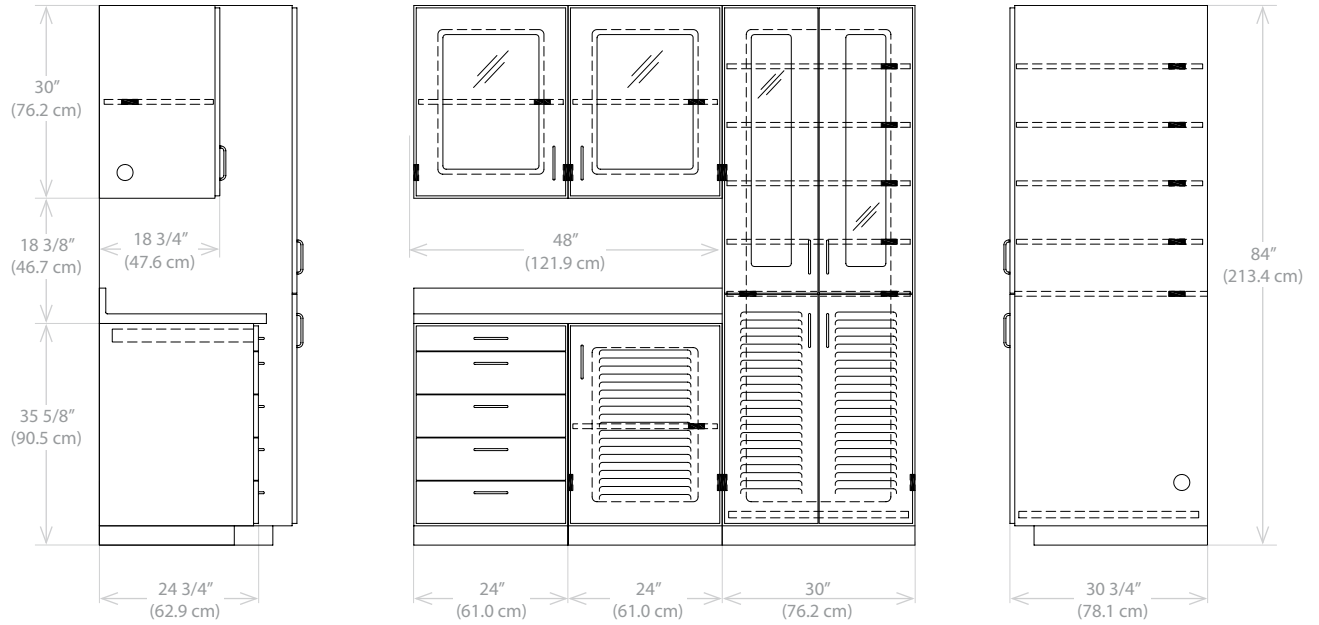


DOC54L Laminate with Equipment Tower on Left (shown)  
 DOC54R Laminate with Equipment Tower on Right

○ — Wire Pass-Thrus

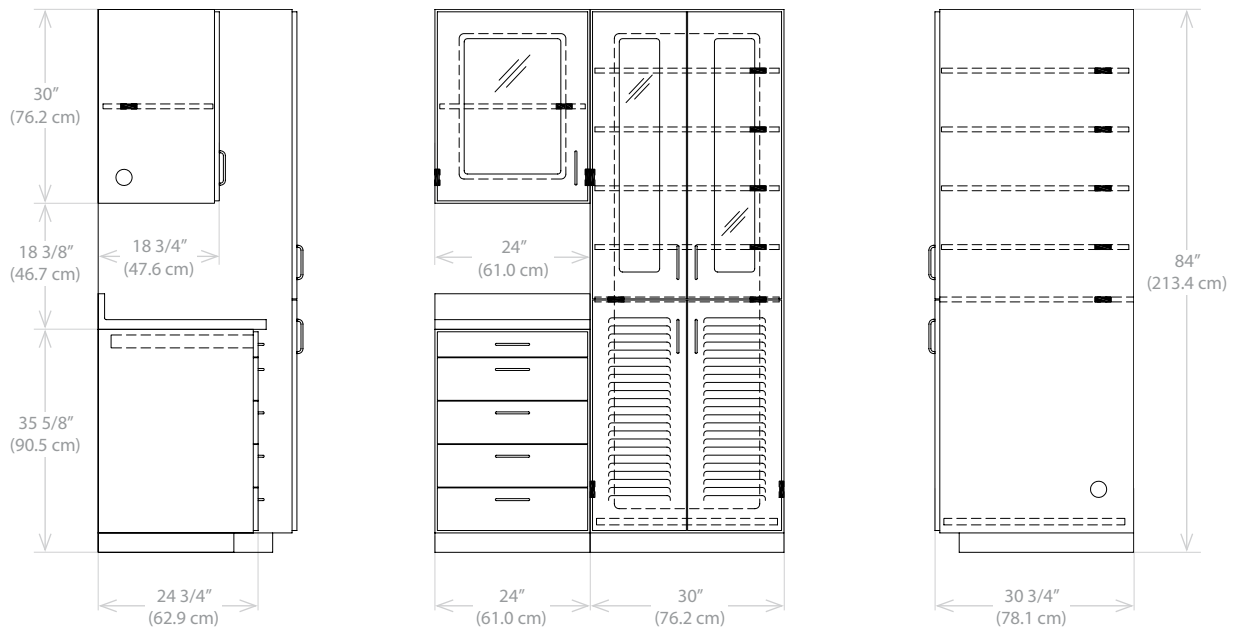
## Pre-Configured Documentation Stations – Stainless Steel

78" (198.1 cm) and 54" (137.2 cm) Widths



DOC78RS Stainless with Equipment Tower on Right (shown)  
 DOC78LS Stainless with Equipment Tower on Left

○ ■ Wire Pass-Through

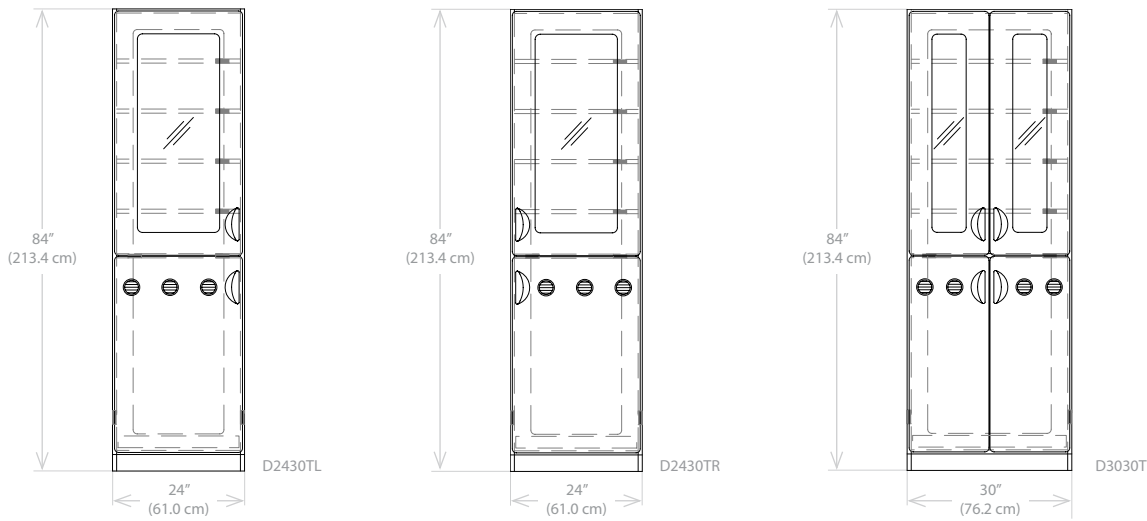


DOC54RS Stainless with Equipment Tower on Right (shown)  
 DOC54LS Stainless with Equipment Tower on Left

○ ■ Wire Pass-Through

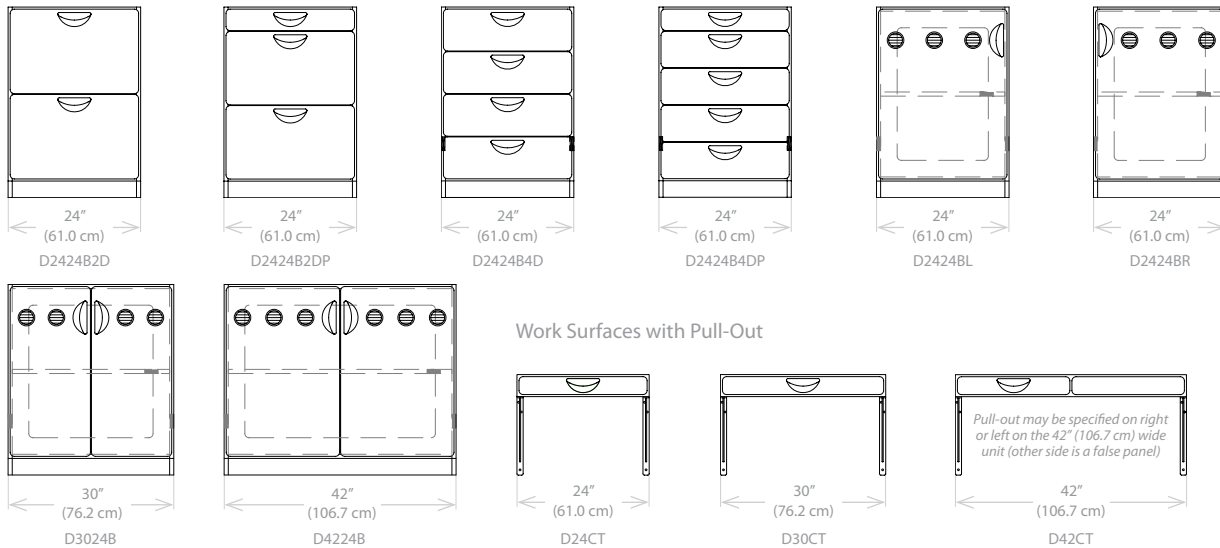
## Build-A-Documentation Station – Laminate

### Step 1: Select an Equipment Tower



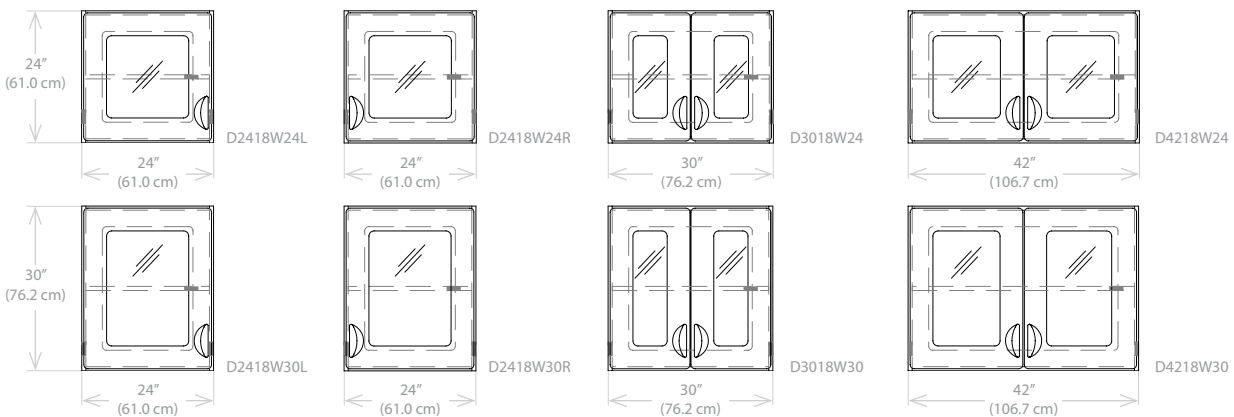
### Step 2: Select a Lower Cabinet\* or Work Surface with Pull-Out

Height: 35 5/8" (90.5 cm) Depth: 24 3/4" (62.9 cm)



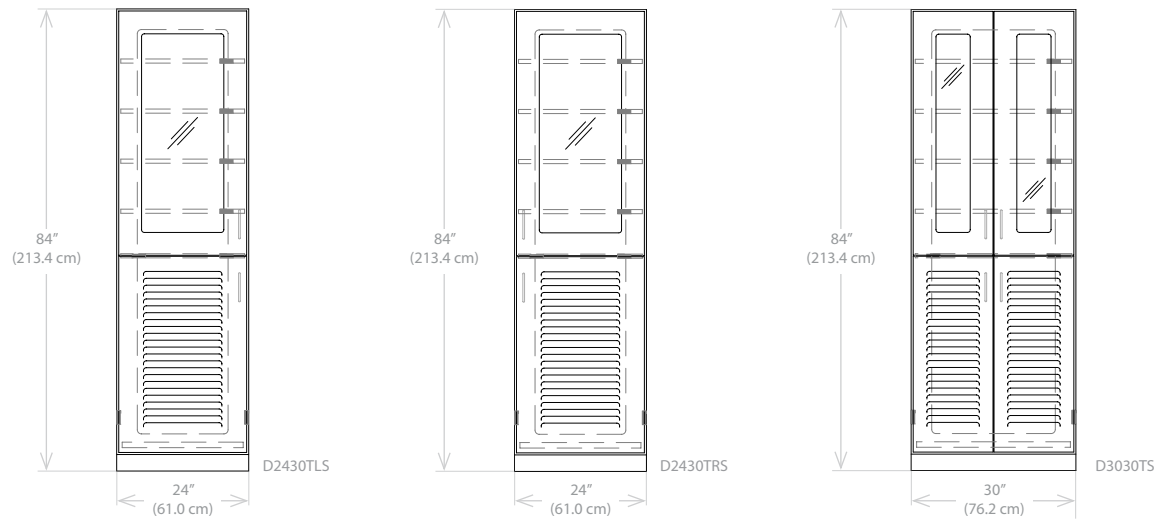
### Step 3: Select an Upper Cabinet (Available in 24" (61.0 cm) and 30" (76.2 cm) Heights)

Depth: 18 3/4" (47.6 cm)



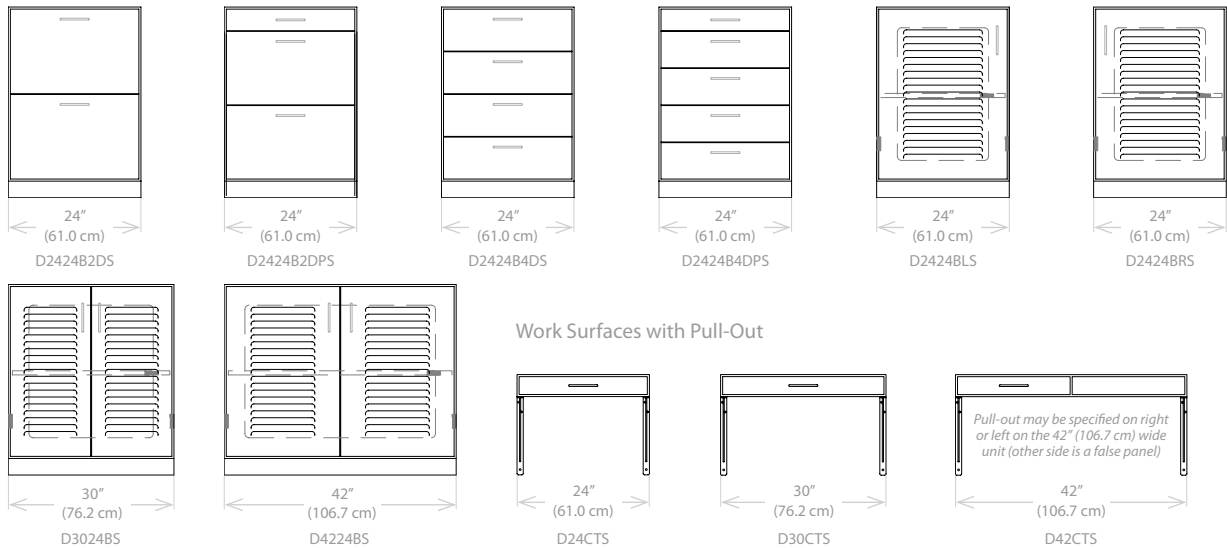
## Build-A-Documentation Station – Stainless Steel

### Step 1: Select an Equipment Tower



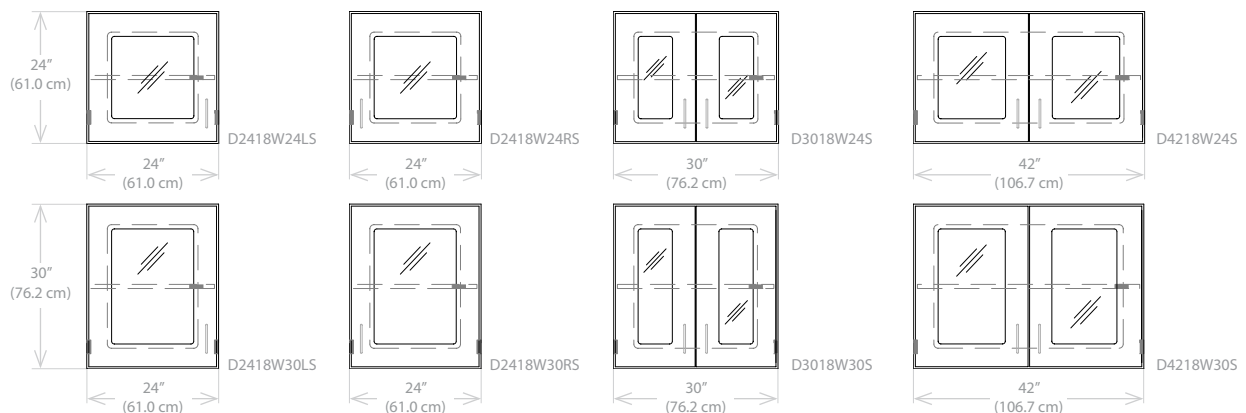
### Step 2: Select a Lower Cabinet\* or Work Surface with Pull-Out

Height: 35 5/8" (90.5 cm) Depth: 24 3/4" (62.9 cm)



### Step 3: Select an Upper Cabinet (Available in 24" (61.0 cm) and 30" (76.2 cm) Heights)

Depth: 18 3/4" (47.6 cm)



\* Specify length of stainless steel work surface, ssct, required for lower cabinet (See page 12).

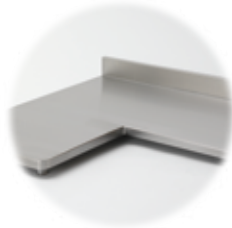
## Laminate Colors

Laminate color selections for your documentation station can be selected from Wilsonart®, Pionite® or Formica® branded laminates. Color samples can be viewed at [wilsonart.com](http://wilsonart.com), [pionite.com](http://pionite.com) or [formica.com](http://formica.com).

## Accessories



Slope Top on D3030T  
Available on any tower  
or upper cabinet  
(See page 12).



Custom "L" Shaped  
Stainless Steel Work Surface



Task Light  
TKL



Power Strip  
PS



Key Lock  
One lock required per door

## Product Specifications

Materials	
LAMINATE DOCUMENTATION STATIONS	
Cabinet Body	Thermally Fused Melamine Over 3/4" (1.9 cm) Particleboard, Color is Soft White
Door Pulls	Recessed Polymer Door Pull
Doors	High Pressure Laminated 3/4" (1.9 cm) Particleboard
Edge Banding	PVC, 1 Millimeter Thick, Color is Soft White
Glass	Tempered Safety Glass, Poly Sealed 1/4" (0.6 cm) Thick
Glides	100 lb (45.5 kg) Full Extension Glides
Hinges	Heavy Duty 5 Knuckle, White
Levelers	Steel, Threaded Levelers. Height Adjustment Range 1/2" (1.3 cm) to 1-1/2" (3.8 cm)
STAINLESS STEEL DOCUMENTATION STATIONS	
Cabinet Exterior	18 Gauge 304 Stainless Steel. #4 Finish
Cabinet Interior	14 Gauge 304 Stainless Steel with Standard Mill Finish
Door Pulls	European Design 5" (12.7 cm) Door Pull
Doors	Double Pane 18 Gauge 304 Stainless Steel. #4 Finish
Glass	Tempered Safety Glass, Poly Sealed 1/4" (0.6 cm) Thick
Glides	100 lb (45.5 kg) Full Extension Glides
Hinges	Heavy Duty 5 Knuckle, Dull Chrome
Levelers	Steel, Threaded Levelers. Height Adjustment Range 1/2" (1.3 cm) to 1-1/2" (3.8 cm)

## Model Numbers and Descriptions

Model Numbers	Descriptions	Height Inches (cm)	Width Inches (cm)	Depth Inches (cm)	Weight Pounds (kg)	Page
PRE-CONFIGURED DOCUMENTATION STATIONS		EXTERIOR				
LAMINATE OPTIONS						
DOC78L	Laminate, Equipment Tower on Left, 78"W	84 (213.4)	78 (198.1)	30-3/4 (76.1)	730 (331.8)	4 - 7
DOC78R	Laminate, Equipment Tower on Right, 78"W					NOT SHOWN
DOC54L	Laminate, Equipment Tower on Left, 54"W					4 - 7
DOC54R	Laminate, Equipment Tower on Right, 54"W					NOT SHOWN
STAINLESS STEEL OPTIONS						
DOC78LS	Stainless, Equipment Tower on Left, 78"W	84 (213.4)	78 (198.1)	30-3/4 (76.1)	647 (294.1)	4 - 7
DOC78RS	Stainless, Equipment Tower on Right, 78"W					NOT SHOWN
DOC54LS	Stainless, Equipment Tower on Left, 54"W					4 - 7
DOC54RS	Stainless, Equipment Tower on Right, 54"W					NOT SHOWN
BUILD-A-DOC STATION						
LAMINATE DOCUMENTATION STATION LOWER CABINETS						
D2424B2D	Lower Cabinet, Laminate, Two (2) Drawers	34-1/2 (87.6)	24 (61.0)	24-3/4 (62.9)	140 (63.6)	8
D2424B2DP	Lower Cabinet, Laminate, Two (2) Drawers, Pull-Out Work Surface				150 (68.2)	
D2424B4D	Lower Cabinet, Laminate, Four (4) Drawers				138 (62.7)	
D2424B4DP	Lower Cabinet, Laminate, Four (4) Drawers, Pull-Out Work Surface				149 (67.7)	
D2424BL	Lower Cabinet, Laminate, Left Hinge Vented Door, One (1) Adj Shelf				101 (45.9)	
D2424BR	Lower Cabinet, Laminate, Right Hinge Vented Door, One (1) Adj Shelf				101 (45.9)	
D3024B	Lower Cabinet, Laminate, Vented Double Doors, One (1) Adj Shelf				117 (53.2)	
D4224B	Lower Cabinet, Laminate, Vented Double Doors, One (1) Adj Shelf				156 (70.9)	
LAMINATE DOCUMENTATION STATION WORK SURFACES**						
D24CT	Work Surface, Laminate with Pull-Out. Includes two (2) WTB	4 (10.2)	24 (61.0)	24-3/4 (62.9)	N/A	8
D30CT	Work Surface, Laminate with Pull-Out. Includes two (2) WTB		30 (76.2)			
D42CT	Work Surface, Laminate with Pull-Out. Includes two (2) WTB		42 (106.7)			
CWT	Post Formed Laminate, 4" (10.2 cm) Backsplash. Wilsonart Designer White (D354-60). Maximum Length 144" (365.8 cm)	1-1/2 (3.8)	Custom	25-1/4 (64.1)	N/A	NOT SHOWN
CT-FG	Two (2) Piece Construction with Separate Backsplash Wilsonart Fashion Grey (D381-60). Maximum Length 96" (243.8 cm)	1-1/8 (2.9)	N/A	25 (63.5)		
CT-DW	Two (2) Piece Construction with Separate Backsplash Wilsonart Designer White (D354-60). Maximum Length 96" (243.8 cm)					
CT-AW	Two (2) Piece Construction with Separate Backsplash Wilsonart Antique White (D354-60). Maximum Length 96" (243.8 cm)					
CT-FS	Two (2) Piece Construction with Separate Backsplash Wilsonart Featherstone (D72-60). Maximum Length 96" (243.8 cm)					
WTB	Work Surface Support Bracket	N/A	N/A	N/A		
LAMINATE DOCUMENTATION STATION EQUIPMENT TOWERS						
D2430TL	Equipment Towers, Laminate, Left Hinge Glass Upper Door, Vented Lower Door	84 (213.4)	24 (61.0)	30-3/4 (76.1)	271 (123.2)	8
D2430TR	Equipment Towers, Laminate, Right Hinge Glass Upper Door, Vented Lower Door		30 (76.2)			
D3030T	Equipment Towers, Laminate, Glass Upper Double Doors, Vented Lower Doors					
LAMINATE DOCUMENTATION STATION UPPER CABINETS						
D2418W24L	Upper Cabinet, Laminate, Left Hinge Glass Door, One (1) Adj Shelf	24 (61.0)	24 (61.0)	18-3/4 (47.6)	60 (27.3)	8
D2418W24R	Upper Cabinet, Laminate, Right Hinge Glass Door, One (1) Adj Shelf	30 (76.2)			30 (76.2)	
D2418W30L	Upper Cabinet, Laminate, Left Hinge Glass Door, One (1) Adj Shelf		24 (61.0)			
D2418W30R	Upper Cabinet, Laminate, Right Hinge Glass Door, One (1) Adj Shelf	30 (76.2)	81 (36.8)			
D3018W24	Upper Cabinet, Laminate, Glass Double Doors, One (1) Adj Shelf	24 (61.0)	42 (106.7)		96 (43.6)	
D3018W30	Upper Cabinet, Laminate, Glass Double Doors, One (1) Adj Shelf	30 (76.2)	30 (76.2)		104 (47.3)	
D4218W24	Upper Cabinet, Laminate, Glass Double Doors, One (1) Adj Shelf	24 (61.0)			30 (76.2)	
D4218W30	Upper Cabinet, Laminate, Glass Double Doors, One (1) Adj Shelf	30 (76.2)				

## Model Numbers and Descriptions

Model Numbers	Descriptions	Height Inches (cm)	Width Inches (cm)	Depth Inches (cm)	Weight Pounds (kg)	Page	
BUILD-A-DOC STATION, CONT.							
STAINLESS STEEL DOCUMENTATION STATION LOWER CABINETS							
D2424B2DS	Lower Cabinet, Stainless, Two (2) Drawers	34-1/2 (87.6)	24 (61.0)	24-3/4 (62.9)	68 (30.9)	9	
D2424B2DPS	Lower Cabinet, Stainless, Two (2) Drawers, Pull-Out Work Surface				75 (34.1)		
D2424B4DS	Lower Cabinet, Stainless, Four (4) Drawers				80 (36.4)		
D2424B4DPS	Lower Cabinet, Stainless, Four (4) Drawers, Pull-Out Work Surface				85 (38.6)		
D2424BLS	Lower Cabinet, Stainless, Left Hinge Vented Door, One (1) Adj Shelf				62 (28.2)		
D2424BRS	Lower Cabinet, Stainless, Right Hinge Vented Door, One (1) Adj Shelf				62 (28.2)		
D3024BS	Lower Cabinet, Stainless, Vented Double Doors, One (1) Adj Shelf				30 (76.2)		78 (35.5)
D4224BS	Lower Cabinet, Stainless, Vented Double Doors, One (1) Adj Shelf				42 (106.7)		90 (40.9)
STAINLESS STEEL DOCUMENTATION STATION WORK SURFACES **							
D24CTS	Work Surface, Stainless with Pull-Out. Includes two (2) stainless brackets.	4 (10.2)	24 (61.0)	24-3/4 (62.9)	40 (18.2)	9	
D30CTS	Work Surface, Stainless with Pull-Out. Includes two (2) stainless brackets.		30 (76.2)		51 (23.2)		
D42CTS	Work Surface, Stainless with Pull-Out. Includes two (2) stainless brackets.		42 (106.7)		72 (32.7)		
SSCT	Stainless Seamless Work Surface with 4" (10.2 cm) Backsplash	1-1/2 (3.8)	Custom	26 (66.0)	N/A	NOT SHOWN	
STAINLESS STEEL DOCUMENTATION STATION EQUIPMENT TOWER							
D2430TLS	Equipment Tower, Stainless, Left Hinge Glass Upper Door, Vented Lower Door	84 (213.4)	24 (61.0)	30-3/4 (78.1)	265 (120.5)	9	
D2430TRS	Equipment Tower, Stainless, Right Hinge Glass Upper Door, Vented Lower Door		265 (120.5)				
D3030TS	Equipment Tower, Stainless, Glass Double Upper Doors, Vented Lower Doors		30 (76.2)		294 (133.6)		
STAINLESS STEEL DOCUMENTATION STATION UPPER CABINETS							
D2418W24LS	Upper Cabinet, Stainless, Left Hinge Glass Door, One (1) Adj Shelf	24 (61.0)	24 (61.0)	18-3/4 (47.6)	61 (27.7)	9	
D2418W24RS	Upper Cabinet, Stainless, Right Hinge Glass Door, One (1) Adj Shelf	30 (76.2)			74 (33.6)		
D2418W30LS	Upper Cabinet, Stainless, Left Hinge Glass Door, One (1) Adj Shelf				82 (37.3)		
D2418W30RS	Upper Cabinet, Stainless, Right Hinge Glass Door, One (1) Adj Shelf	30 (76.2)			89 (40.5)		
D3018W24S	Upper Cabinet, Stainless, Glass Double Doors, One (1) Adj Shelf	24 (61.0)			30 (76.2)		98 (44.5)
D3018W30S	Upper Cabinet, Stainless, Glass Double Doors, One (1) Adj Shelf	30 (76.2)			42 (106.7)		110 (50.0)
D4218W24S	Upper Cabinet, Stainless, Glass Double Doors, One (1) Adj Shelf	24 (61.0)					98 (44.5)
D4218W30S	Upper Cabinet, Stainless, Glass Double Doors, One (1) Adj Shelf	30 (76.2)			110 (50.0)		
ACCESSORIES							
LAMINATE DOCUMENTATION STATION SLOPE TOPS							
D2418-ST	Slope Top for D2418W, Laminate	6 (15.2)	24 (61.0)	18 (45.7)	13 (5.9)	10	
D2430-ST	Slope Top for D2430T, Laminate	10 (25.4)		30 (76.2)	24 (10.9)		
D3018-ST	Slope Top for D3018W, Laminate	6 (15.2)	30 (76.2)	18 (45.7)	20 (9.1)		
D3030-ST	Slope Top for D3030T, Laminate	10 (25.4)		30 (76.2)	9 (1.1)		
D4218-ST	Slope Top for D4218W, Laminate	6 (15.2)	42 (106.7)	18 (45.7)	28 (12.7)		
STAINLESS STEEL DOCUMENTATION STATION SLOPE TOPS							
D2418-STs	Slope Top for D2418WS, Stainless	6 (15.2)	24 (61.0)	18 (45.7)	5 (2.3)	NOT SHOWN	
D2430-STs	Slope Top for D2430TS, Stainless	10 (25.4)		30 (76.2)	10 (4.5)		
D3018-STs	Slope Top for D3018WS, Stainless	6 (15.2)	30 (76.2)	18 (45.7)	15 (6.8)		
D3030-STs	Slope Top for D3030TS, Stainless	10 (25.4)		30 (76.2)	15 (6.8)		
D4218-STs	Slope Top for D4218WS, Stainless	6 (15.2)	42 (106.7)	18 (45.7)	15 (6.8)		
OTHER ACCESSORIES							
TKL	Task Light***. Fluorescent, Rocker On/Off Switch	1-1/5 (3.8)	24-1/2 (62.3)	4 (10.2)	N/A	10	
PS	120V Power Strip, 180" (457.2 cm) Cord, Six Outlets						
5200LK	Key Lock for Lower Cabinets and Equipment Tower Doors One (1) Needed per Door						
5300LK	Key Lock for Upper Cabinet - One (1) Needed per Door						
5100FE	Finished End for Laminate Equipment Tower					NOT SHOWN	
5200FE	Finished End for Laminate Lower Cabinet						
5300FE	Finished End for Laminate Upper Cabinet						

\*\* Custom work surfaces available upon request. \*\*\* Requires Hard Wiring to a 110-120V AC, 60Hz fused circuit. All weights are approximate.

## Organized carts, cabinets and casework are the perfect compliment to your Datel documentation station.



5000 Series Laminate Cabinets with Optional Pull-Out Work Surface and Storage Accessories.



5000 Series Stainless Steel Cabinets with Optional Pull-Out Cath Managers and Storage Accessories.

# DATEL®

---

InnerSpace Corporation  
P.O. Box 2186  
Grand Rapids, MI 49501  
800.467.7224 toll-free  
616.954.3333 phone  
616.224.2829 fax  
[www.innerspacecorp.com](http://www.innerspacecorp.com)

© 2007 InnerSpace Corporation. All rights reserved.

Catalog No. DSC001

Litho in USA



PRESRT STD  
U.S. POSTAGE  
**PAID**  
GRAND RAPIDS, MI  
PERMIT NO. 1241