

STANLEY

InnerSpace®

# QuickRack™

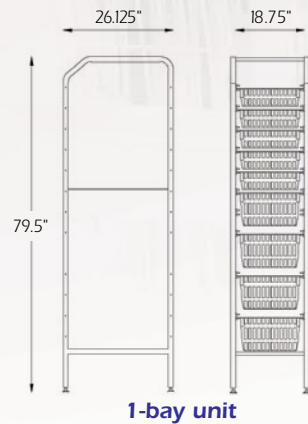
A more organized storage system.  
A better work environment.



# QuickRack Units & Accessories

## Step 1. Determine depth and the number of storage bays needed

### Type A: Stationary Units—26" Deep (D 26.125" x H 79.5")

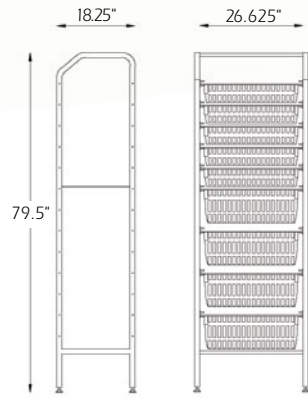


1-bay unit

Part Number	Description	Unit
16-71601	Accessory Support Rail Right, 26"	Each
16-71602	Accessory Support Rail Left, 26"	Each
16-71603	Accessory Support Rail Right, Angled, 26"	Each
16-71604	Accessory Support Rail Left, Angled, 26"	Each
16-71630	Single-Bay Unit, 26" Deep (2 frames & stabilizer kit)	Each
16-71631	Add-On Bay, 26" Deep (1 frame & stabilizer kit)	Each

- Max. 26 accessory supports per bay
- Space between accessory support holes is 2.5"
- First bay section measures 18.75" wide; each add-on bay increases the external width by 17.5"

### Type B: Stationary Units—18" Deep (D 18.25" x H 79.5")



1-bay unit

Part Number	Description	Unit
16-71401	Accessory Support Rail Right, 18"	Each
16-71402	Accessory Support Rail Left, 18"	Each
16-71403	Accessory Support Rail Right, Angled, 18"	Each
16-71404	Accessory Support Rail Left, Angled, 18"	Each
16-71430	Single-Bay Unit, 18" Deep (2 frames & stabilizer kit)	Each
16-71431	Add-On Bay, 18" Deep (1 frame & stabilizer kit)	Each

- Max. 26 accessory supports per bay
- Space between accessory support holes is 2.5"
- First bay section measures 26.625" wide; each add-on bay increases the external width by 25.5"

## Step 2. Choose Accessories

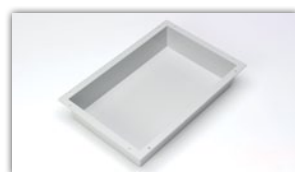
### Shelf



Part Number	Description	Unit
22-64403	Melamine Shelf, White	Each

- D 23.625" x W 15.75" x H 0.5"
- Does not accept label holders or dividers

### Smooth Trays



Part Number	Description	Unit
20-64205	Tray, 2", Gray	Each
20-64210	Tray, 4", Gray	Each
20-64220	Tray, 8", Gray	Each
20-64228	Tray, 11", Gray	Each

- Smooth trays do not accept partitions
- May be used in 18" or 26" deep QuickRacks

## A fast, efficient way to organize your supplies.

A modular storage system that complements your Kanban 2-bin system, Stanley® InnerSpace® QuickRack™ enables you to store your high-volume, low-dollar supplies more efficiently than ever before. With enhanced visibility of supplies, you'll reduce the risk of shortages and storage of obsolete products.

### QuickRack features include:

- Angled and horizontal accessory supports
- Supports can be adjusted in 2.5" intervals; easy to make changes and add to system
- Supports designed with a stop-function in the front and rear
- Freestanding frames made with 1.25" x 1.25" metal tubes and powder-coated with epoxy
- Baskets can be angled to provide easy access to items stored at higher levels

Call us for a free onsite storage analysis at 800.467.7224.

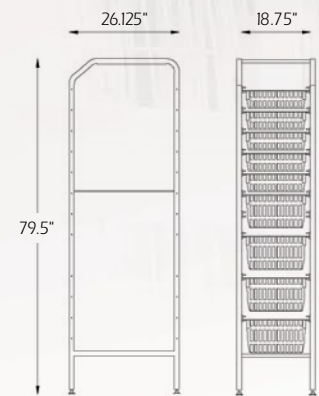
STANLEY  
InnerSpace®



# QuickRack Units & Accessories

## Step 1. Determine depth and the number of storage bays needed

### Type A: Stationary Units—26" Deep (D 26.125" x H 79.5")

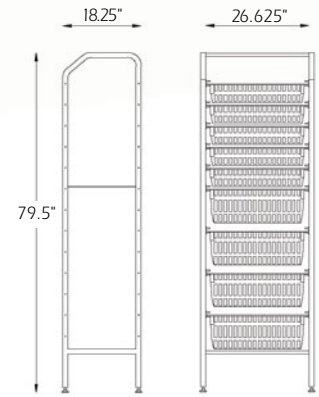


1-bay unit

Part Number	Description	Unit
16-71601	Accessory Support Rail Right, 26"	Each
16-71602	Accessory Support Rail Left, 26"	Each
16-71603	Accessory Support Rail Right, Angled, 26"	Each
16-71604	Accessory Support Rail Left, Angled, 26"	Each
16-71630	Single-Bay Unit, 26" Deep (2 frames & stabilizer kit)	Each
16-71631	Add-On Bay, 26" Deep (1 frame & stabilizer kit)	Each

- Max. 26 accessory supports per bay
- Space between accessory support holes is 2.5"
- First bay section measures 18.75" wide; each add-on bay increases the external width by 17.5"

### Type B: Stationary Units—18" Deep (D 18.25" x H 79.5")



1-bay unit

Part Number	Description	Unit
16-71401	Accessory Support Rail Right, 18"	Each
16-71402	Accessory Support Rail Left, 18"	Each
16-71403	Accessory Support Rail Right, Angled, 18"	Each
16-71404	Accessory Support Rail Left, Angled, 18"	Each
16-71430	Single-Bay Unit, 18" Deep (2 frames & stabilizer kit)	Each
16-71431	Add-On Bay, 18" Deep (1 frame & stabilizer kit)	Each

- Max. 26 accessory supports per bay
- Space between accessory support holes is 2.5"
- First bay section measures 26.625" wide; each add-on bay increases the external width by 25.5"

## Step 2. Choose Accessories

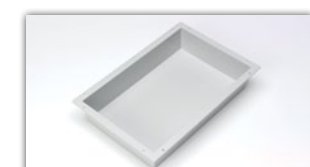
### Shelf



Part Number	Description	Unit
22-64403	Melamine Shelf, White	Each

- D 23.625" x W 15.75" x H 0.5"
- Does not accept label holders or dividers

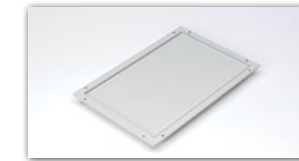
### Smooth Trays



Part Number	Description	Unit
20-64205	Tray, 2", Gray	Each
20-64210	Tray, 4", Gray	Each
20-64220	Tray, 8", Gray	Each
20-64228	Tray, 11", Gray	Each

- Smooth trays do not accept partitions
- May be used in 18" or 26" deep QuickRacks

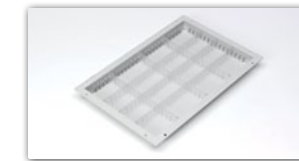
### Tray Lid



Part Number	Description	Unit
20-64201	Tray Lid, Gray	Each

- May be used on trays with or without partitions

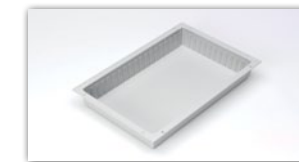
### 2" Tray/Partitions



Part Number	Description	Unit
20-64206	Tray, 2", for Use w/Partitions, Gray	Each
20-64270	Partition, 2" x 15.75", Clear	Each
20-64271	Partition, 2" x 23.625", Clear	Each
20-64272	Partition, 2" x 7.875", Clear	Each

- Tray: D 23.625" x W 15.75" x H 2"
- Long partition 23.625"
- Short partition 15.75"
- Subpartition 7.825"; requires a T-divider clip

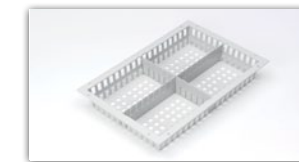
### 4" Trays



Part Number	Description	Unit
20-64211	Tray, 4", for Use w/Partitions, Gray	Each
23-64353	Partition, 4" x 15.75", Clear	Each
23-64354	Partition, 4" x 23.625", Clear	Each

- Tray: D 23.625" x W 15.75" x H 2"
- Long partition 23.625"
- Short partition 15.75"
- Subpartition 7.825"; requires a T-divider clip

### 4" Baskets



Part Number	Description	Unit
23-64251	Basket, 4", Gray	Each
23-64253	Divider, 4" x 15.75", Gray	Each
23-64254	Divider, 4" x 23.625", Gray	Each
23-64257	Divider, 4" x 11.75", Gray	Each

- Tray: D 23.625" x W 15.75" x H 2"
- Long divider 23.625"
- Short divider 15.75"
- Subdivider 7.825"; requires a T-divider clip

### 8" Basket/Dividers



Part Number	Description	Unit
23-64252	Basket, 8", Gray	Each
23-64255	Divider, 8" x 15.75", Gray	Each
23-64256	Divider, 8" x 23.625", Gray	Each

- Basket D 23.675" x W 15.75" x H 8"
- Long divider 23.625"
- Short divider 15.75"

### Half Baskets



Part Number	Description	Unit
23-34251	4" Half Basket, D 11.75" x W 15.75" x H 4", Gray	Each
23-34252	8" Half Basket, D 11.75" x W 15.75" x H 8", Gray	Each

- For 26" deep QuickRack only
- Store two half baskets, one in front of the other, on one accessory rail set
- 4" half basket accepts 15.75" divider (23-64253) and 11.75" (23-64257) divider
- 8" half basket accepts 15.75" divider (23-64255)

### T-Divider Clip



Part Number	Description	Unit
20-64266	T-Divider Clip	Each

### Safety Stops



Part Number	Description	Unit
19-61870	Safety Stops, 2 Piece, Blue	Each

- Used to prevent baskets from falling out of the accessory rails when baskets are fully extended
- Two per tray/basket recommended

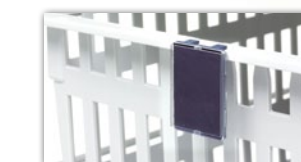
### Casters



Part Number	Description	Unit
24-90000	3" Casters (1 breaking, 1 non-breaking)	Set

## Step 3. Choose your labels

### Vertical Label Holder



Part Number	Description	Unit
19-61790	Label Holder, Vertical, Blue	Each
19-61804	Clear Cover for Vertical Label Holder, Single Label	Each
19-61802	Clear Cover for Horizontal Label Holder, Double Label	Each

- For labels W 1.5" x H 2.25"

### Horizontal Label Holder



Part Number	Description	Unit
19-61818	Label Holder, Horizontal, Blue	Each
19-61805	Label Holder, Horizontal, Angled, Blue	Each
19-61804	Clear Cover for Vertical/Horizontal Label Holders, Single Label	Each
19-61802	Clear Cover for Vertical Label Holder, Double Label	Each

- For labels W 2.25" x H 1.5"

### Horizontal "Credit Card" Holder



Part Number	Description	Unit
19-61810	Label Holder, Horizontal, Credit Card Size	Each
19-61817	Yellow Card	Each
19-61811	Red Card	Each
19-61812	Blue Card	Each
19-61813	Green Card	Each
19-61814	White Card	Each
19-61816	Clear Cover for Plastic Cards	Each

- Snaps securely to trays, baskets, or dividers

### Label Holder Bar



Part Number	Description	Unit
19-64857	Label Holder, Aluminum, 13.75" long	Each
19-64858	Label Holder, Aluminum, 21.625" long	Each

- Aluminum rail easily mounts to any wall; mounting hardware included
- Place label holders on the aluminum rail in the room as a visual cue that inventory replenishment is needed for that item; return the tag to the appropriate storage bin when the item is replenished

**STANLEY**

**InnerSpace**<sup>®</sup>

P.O. Box 2186 ▪ Grand Rapids, MI 49501-2186

616.224.2828 ▪ Toll-Free: 800.467.7224

Fax: 866.644.1745

[StanleyInnerSpace.com](http://StanleyInnerSpace.com)

PRSRT STD  
US POSTAGE  
PAID  
GRAND RAPIDS MI  
PERMIT NO 1241

©2011 Stanley InnerSpace. All Rights Reserved. Catalog No. QLC004 Litho in USA

## Solve a variety of storage needs with InnerSpace open storage solutions!

- Delivers economical high-density storage solutions
- Promotes air circulation
- Prevents dust accumulation
- Available as mobile and stationary wire storage, wall-mounted storage, and modular mobile and stationary cell storage
- Ideal for central supply/SPD, maintenance/facility, clinical store rooms, and more
- To schedule a FREE onsite storage analysis and design assistance utilizing Lean principles, call **800.467.7224**



**Mixed Sources**

Product group from well-managed forests and other controlled sources  
[www.fsc.org](http://www.fsc.org) Cert no. SW-COC-003618  
© 1996 Forest Stewardship Council

[StanleyInnerSpace.com](http://StanleyInnerSpace.com)